

BX-A-12-LC-24-OM3

— Fiber optic patch panel 1U 19“ extendable version, 12 x LCDX multimode, splicing devices, 24 pigtails LC-OM3 1 m —

Grade steel

Coloring: RAL 9005 (black), RAL 7035 (light grey), other colors available on request

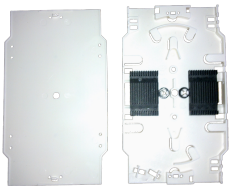
APPLICATION

Fumo’s fiber optic panel solutions are developed to supply the essential elements of fiber cable management; connector and cable accessibility, bending radius protection, cable routing paths and physical protection. If these elements are executed correctly, the network can deliver its full competitive advantages. The 1 height unit, 19“ width, extendable V4M version, with 12 adapters LC/DX multimode, 12 blind fillers, the full splicing devices for 24 fibers, and 24 fiber-pigtails LC-50/125µm OM3 1 meter, comes fully equipped for plug&play integration. Standard RAL-colors: smooth grey RAL 7035 and smooth black RAL 9005 (customized colors and logo-prints are available on request).

PATCH PANEL



SPlicing ACCESSORIES



• Stackable splice tray 2/24 splices

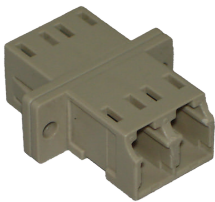


• Splice comb (holder) 6/12 splices

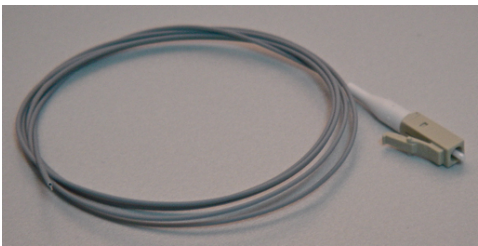


• Splice protectors heat shrink/crimp

ADAPTERS



PIGTAILS



TECHNICAL SPECIFICATION

Panel	: standard panel kit 24 outlets (12 adapters + 12 blind fillers)
Adapters	: LC/DX multimode
Capacity	: 12
Type	: rack mounting
Material of panel	: grade steel
Dimension	: 19“, 1 height unit
Drawer look	: push-pull lock
Cable entry	: 2 x PG13.5 perforated 2 x PG13.5 open
Coating	: powder coating
Standard colors	: RAL 9005 - black RAL 7035 - light grey (other colors available on request)
Colors of numbering	: white or black (other colors available on request)
Splicing devices	: splice trays, -protectors & -holders for 24 connections (see details on the left)
Blind fillers	: LC-duplex (SC-simplex) outlet, black color
Adapters	: LC-LC duplex, multimode, plastic compound beige color, phosphor-bronze (PbBr) sleeve, snap-on- and screwing devices M2 x 6, push-pull-connection for inserting connectors, typical attenuation ≤ 0.20dB (dep. on accuracy of inserting connectors), 1000 mating cycles, temperature range -40°C to 85°C (detailed specs, see data sheet LL-AD-LCLC-DX-mm)
Pigtails	: Fiber-pigtail LC OM3, 1 meter, typical attenuation ≤0.25 dB, typical return loss ≥25 dB, temperature range -10°C to 65°C, fiber in grey or 12 colors acc. to VDE-norm, easy-strip version, boot in white color, 50/125 fiber according to ITU-T G.651.OM3 (detailed specs, see data sheet LL-PGT-LC-OM3)

PACKAGING

- High density cardboard.
- Corners are supported with Styrapor-protection.

