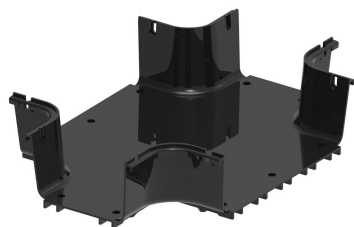


# FGSB-MHXP-B/F



## FiberGuide® Horizontal Cross with Dual 4x6in and Dual 4x12in Exits, Black

- FiberGuide products are designed and manufactured to ensure total off-frame fiber cable protection
- FiberGuide maintains a minimum bend radius throughout the entire system, regardless the system size
- FiberGuide is an optical raceway system for central office, mobile switching center and data center applications
- Engineers and installers can benefit from the large suite of available FiberGuide design tools

### Product Classification

Regional Availability	Asia   Australia/New Zealand   EMEA   Latin America   North America
Portfolio	CommScope®
Product Type	Fiber raceway cross section
Product Brand	FiberGuide®
Product Series	FGS

### General Specifications

Color	Black
Orientation	Horizontal
Section Type	Cross section

### Dimensions

System Dimensions	102 mm x 152 mm (4 in x 6 in)   102 mm x 305 mm (4 in x 12 in)
-------------------	--

### Ordering Tree

# FGSB-MHXP-B/F

9

FGS

B

-

MHXP

-

A

10

### Section Color

9	empty	yellow
	B	black

### Section Size

10	A	4 x 4 in
	B	4 x 6 in
	B/F	4 x 12 in, with two 4 x 6 in exits
	B/F-VS	4 x 12 in, with two 4 x 6 in exits, variable support bracket
	C	2 x 2 in
	F	4 x 24 in
	F/H	4 x 24 in, with two 4 x 12 in exits
	F/H-VS	4 x 24 in, with two 4 x 12 in exits, variable support bracket
	F/VS	4 x 12 in , variable support bracket
	G	2 x 6 in
	H	4 x 24 in
	H-VS	4 x 24 in , variable support bracket

\* Support brackets only come in black

## Material Specifications

**Material Type**                      Engineering Thermoplastic

## Environmental Specifications

**Flammability Rating**                      CSA S143   |   UL 2024   |   UL 94 V-0

**Halogen Characteristics**                      Blue Angel   |   TCO '99   |   WEEE

**Safety Standard**                      CSA   |   UL

## Packaging and Weights

**Weight, net**                      1.723 kg   |   3.799 lb

## Regulatory Compliance/Certifications

Agency	Classification
CHINA-ROHS	Below maximum concentration value
REACH-SVHC	Compliant as per SVHC revision on <a href="http://www.commscope.com/ProductCompliance">www.commscope.com/ProductCompliance</a>
ROHS	Compliant

